

Minutes
of the
Montgomery County Airport Advisory Board Meeting
Held April 13 ,2015

Members in Attendance:

Howard Kravetz, Chairman
R.A. (Mickey) Deison
Randy Martin
Barkley Spikes
Bill Wingo
Gary Yount

Members Absent:

Jacques Verron

Staff:

Scott Smith, Airport Director
Mary Wilson, Administrative Assistant

Others in Attendance:

Vickie Croston
Becky Lutte
Steve and Debbie Ratcliff
Bill Teaff
Dan Brouse
Ed Bruno
Mack McCorkle
Sid Andrist
Robert Cunningham
Ryan Morris
Robert Wright
Orlan Franks
Elizabeth Franks
Mike Gibala

There being a quorum present the meeting came to order at 4:30 pm.

1. Consider approval of the January 12, 2015 regular meeting minutes. Mr. Martin made the motion to approve the minutes and Mr. Spikes seconded the motion.

2. Citizen/Tenant Comments. Chairman Kravetz introduced Gary Yount as the newest airport board member.
3. Airport Updates. Mr. Smith presented the board with the April updates. The updates are attached and made a part of these minutes.
4. Other Matters. Orlan Franks stated that he has noticed that the Army personnel driving out the Army facility do not always stop. Mr. Franks stated he has had several near wrecks. Mr. Smith stated he will contact the Army regarding the matter.

Mary Cunningham with Just Fly Flight School stated they now offer the A/P prep test and FAA testing PSI laser grade.

Mr. Smith advised that Mr. Ratcliff has completed his fifth hangar, 17E.

Vickie Croston advised that the EAA has offered two scholarships for two young area women to attend the "Women Soar, You Soar" aviation program at Air Ventures in Oshkosh this summer. Ms. Croston stated that if anyone knew of any young ladies who might be interested to let her know.

5. Airport Capital Improvement Project (TxDOT Aviation Plan). Mr. Smith presented the board with the Airport Capital Improvement Project (CIP) plan. Mr. Smith explained each project along with TxDOT's suggested construction timeline. The plan is attached and made a part of these minutes.

Mr. Bruno asked that instead of the rehabilitation of taxiway "F" being the first project to get underway, he would like to see the parallel taxiway to Runway 14 be moved to the first project to be completed. Mr. Bruno stated that the airport would be much safer with the parallel taxiway and provided examples as to why he felt so. Mr. Smith stated that any revision to the plan will have to be approved by TxDOT but stated he will request that the schedule be changed.

After discussion Chairman Kravetz requested that Mr. Smith make the plan available for review by the users. Mr. Kravetz stated that if there are no negative responses from users, the board meet again on April 28th and can then make recommendation to move forward with the plan with the revision of construction the parallel taxiway first.

Mr. Martin made the motion to approve the plan with the revision as discussed, subject to the user's responses. Mr. Deison seconded the motion and the motion carried.

There being no further business Mr. Martin motioned the meeting adjourn and Mr. Deison seconded the motion. The meeting adjourned at 5:45.

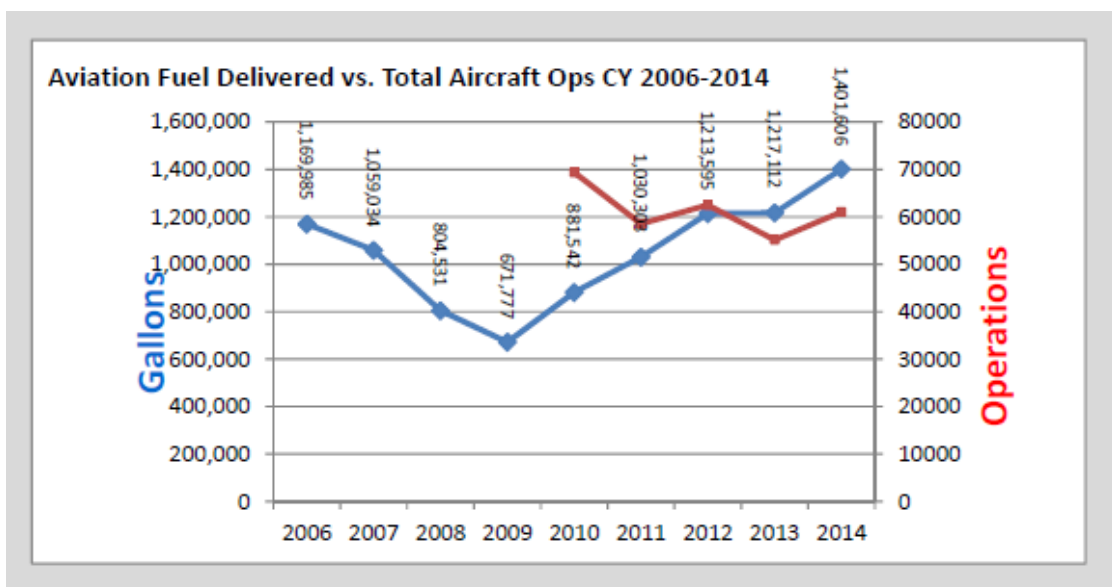
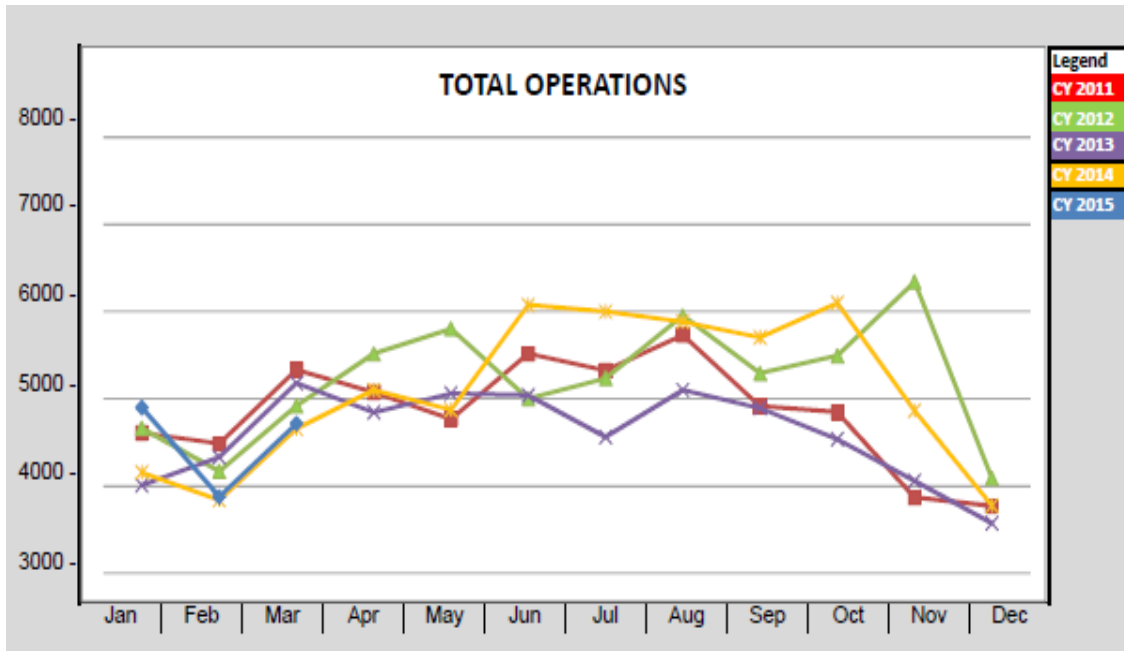
Howard Kravetz
Chairman

Mary Wilson
Administrative Assistant

Update (April 2015)

Air Traffic Numbers, Tower Operation

- 2015 Operations Counts: January – February – March: **13,493**
 - CAL YTD: Local ops 45% Itinerant 55%, IFR 17%
 - CAL YTD vs. 2014: Total Ops +7% Local +15% Itinerant +1%
 - CAL YTD vs. 2013: Total Ops 0% Local +14% Itinerant -10%



RW 14-32 Extension

- Complete, ribbon cutting was March 23, 2015
- Minor corrections to airport diagram to be published by FAA on April 30th
- 8 asphalt – concrete transitions to be re-surfaced
- Other “punch list” items remain, to be completed over next few weeks

Other Airport Projects

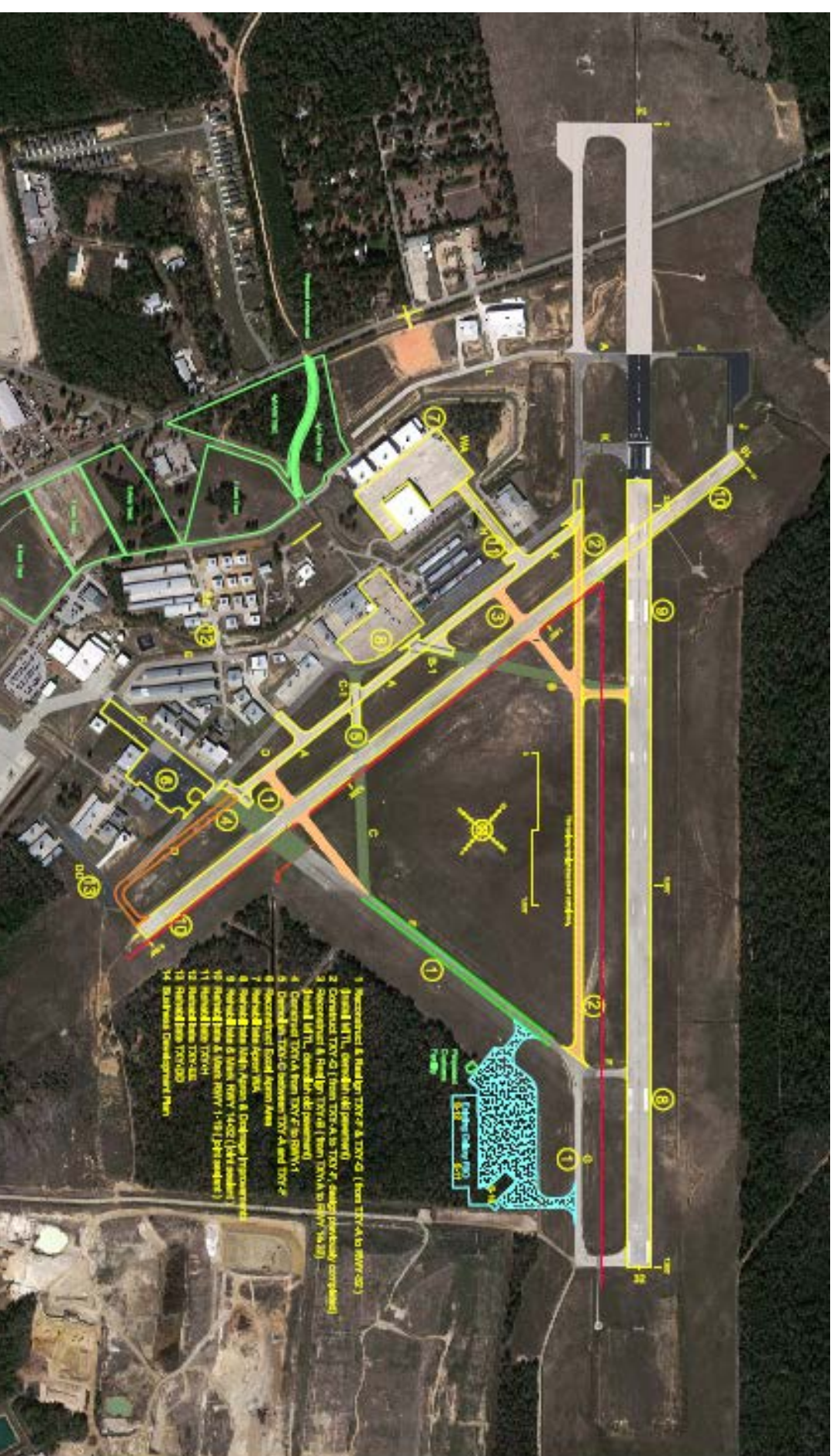
- Wildlife Hazard Plan – approved by TxDOT/FAA – to be implemented
- Re-surfacing of Military Drive, lower Carl Pickering, pending contractor availability
- U.S. Customs Facility - 100% plans in 3rd “final” review with Customs, anticipate bidding out project in May, completion in January 2016
- Wash pad – working with Pct. 1 and County engineer’s office to get started on project
- South Perimeter Road project – funding available if road bond passes
- Texas Air Shuttle start up expected end of April
- HBD Hangars (Taxiway J) – finalizing plans for next hangar rows
- Airport taxiway identification signs: finalizing list of reflective signs to be installed for taxiways A and D

CALENDAR:

Airport Advisory Board Meeting Monday, May 11, 1630

Texas Aviation Association “Lone Star Skies” Aviation Safety Day and Fly-in, Saturday, October 17th, 0800-1200

Proposed Capital Improvements

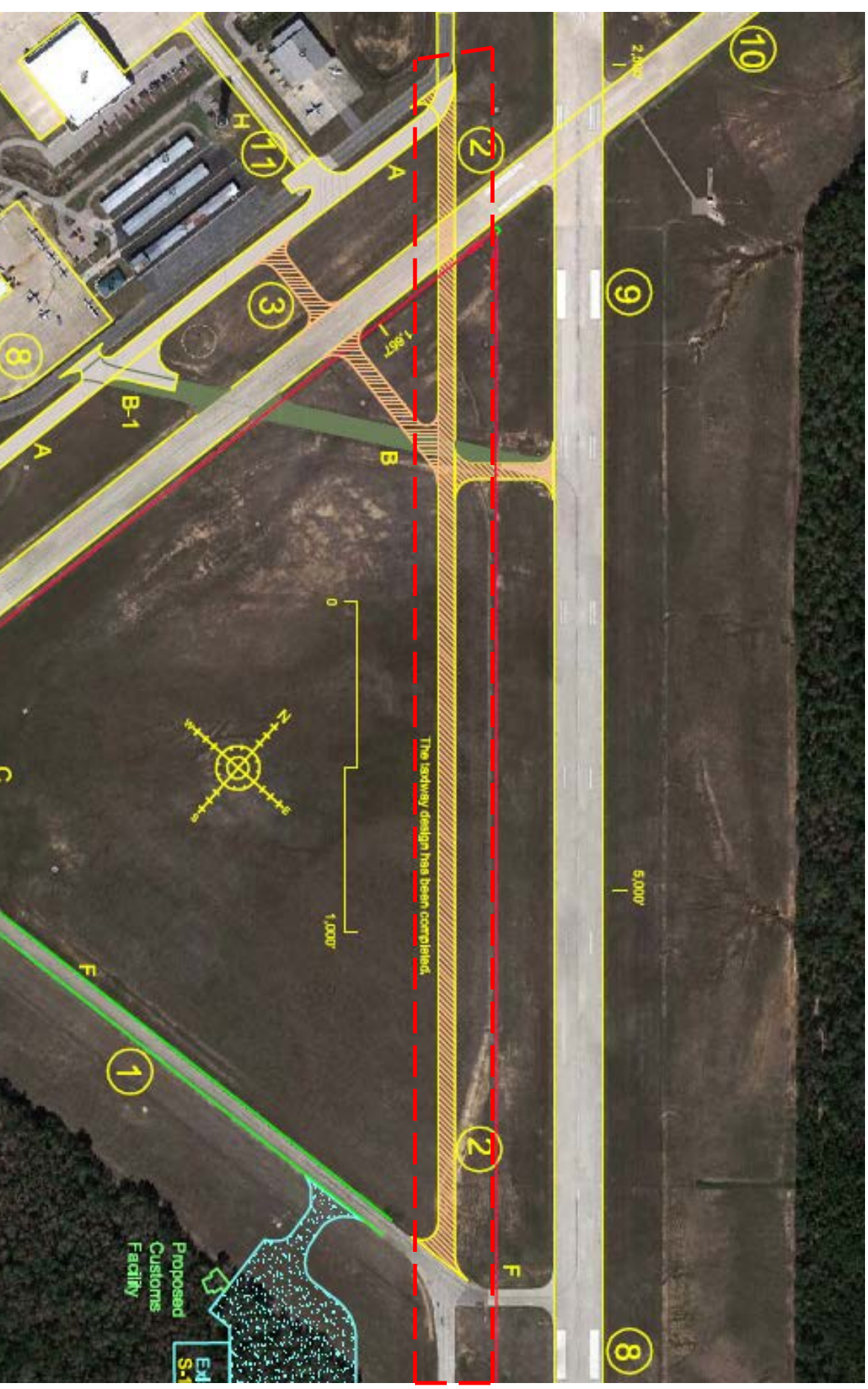




(from TXY-A to RWY-32)

2

Construct TXY-G (from TXY-A to TXY-F)



- ③ Reconstruct & Realign TXY-B (from TXY-A to
RWY 14-32)



4

Construct TXY-A from TXY-F to RWY-1



5

Demolish TXY-C from TXY-A & TWY-F



6

Reconstruct South Apron



7

Rehabilitate Apron WA



8

Rehabilitate Main Apron & Drainage Improvements



6

Rehab & Mark RWY 14-32 (Joint Seal)



10

Rehab & Mark RWY 1-19 (Joint Seal)



11

Rehabilitate TWY-H



12

Rehabilitate TWY-EE



13

Rehabilitate TWY-DD

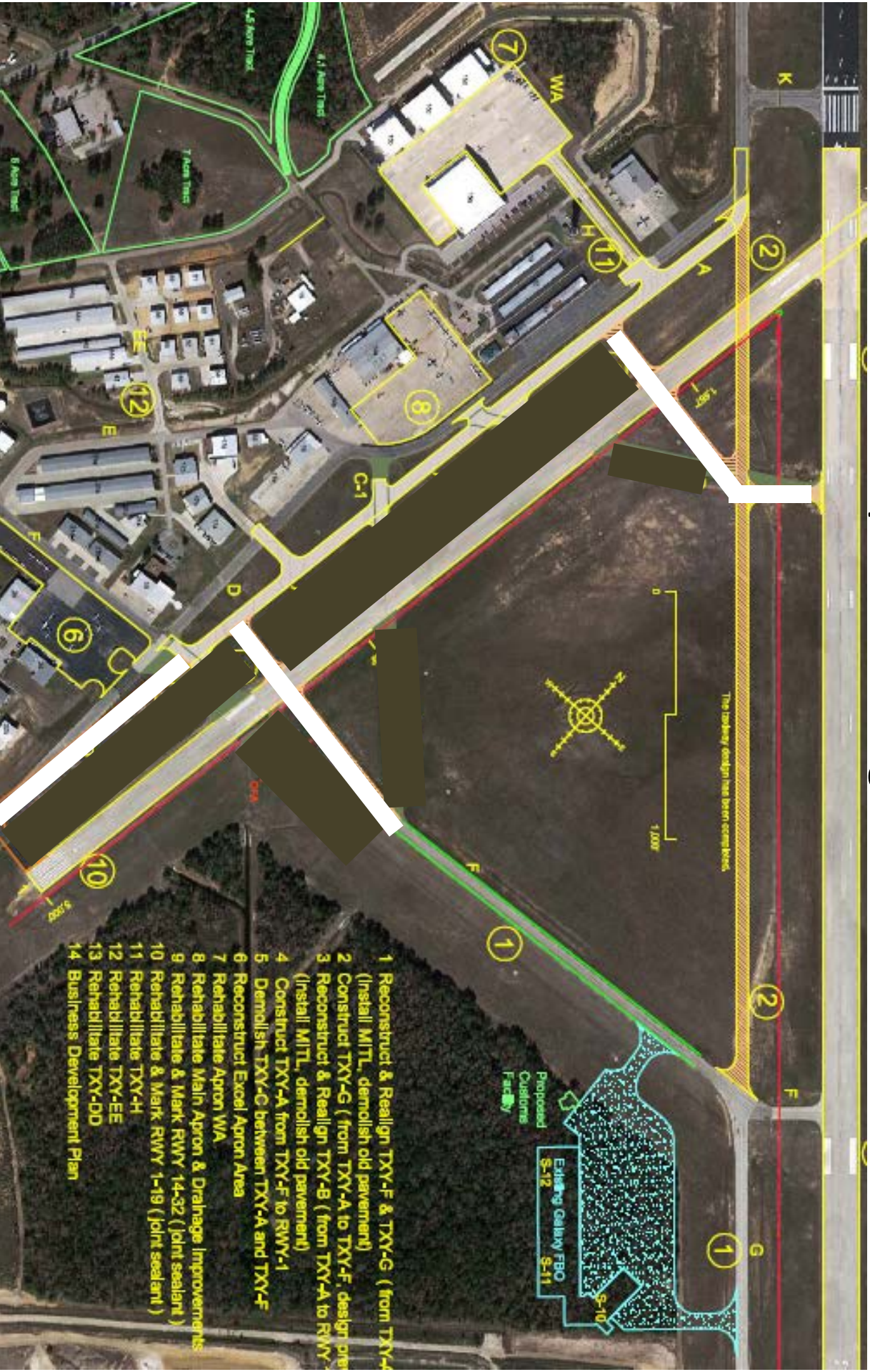


The map shows an aerial view of the Rye Brook Business Center with various infrastructure projects highlighted. Numbered callouts (1-14) indicate specific projects. Color-coded overlays represent different types of work: green for drainage improvements, yellow for pavement, and blue for other infrastructure. Labels include 'Existing Galaxy FBO S-12 S-11', 'Proposed Customers Facility', and 'S-10'. A scale bar indicates 1,000 feet. A large white 'X' is drawn over the central part of the map.

1. Reconstruct & Realign TXY-F & TXY-G (from TXY-A) (Install MITL, demolish old pavement)
2. Construct TXY-G (from TXY-A to TXY-F, design per)
3. Reconstruct & Realign TXY-B (from TXY-A to Rwy 14) (Install MITL, demolish old pavement)
4. Construct TXY-A from TXY-F to Rwy-1
5. Demolish TXY-C between TXY-A and TXY-F
6. Reconstruct Excel Apron Area
7. Rehabilitate Apron W/A
8. Rehabilitate Main Apron & Drainage Improvements
9. Rehabilitate & Mark Rwy 14-32 (Joint Sealant)
10. Rehabilitate & Mark Rwy 1-19 (Joint Sealant)
11. Rehabilitate TXY-H
12. Rehabilitate TXY-EE
13. Rehabilitate TXY-DD
14. Business Development Plan

-
- The runway design has been scoping level.
- 1,000'
- Proposed Customers Facility
- Existing Galaxy FBO S-12 S-11 S-10
- 1 Reconstruct & Realign TXV-F & TXV-G (from TXV-A) (Install MITL, demolish old pavement)
 - 2 Construct TXV-G (from TXV-A to TXV-F, design per 3 Reconstruct & Realign TXV-B (from TXV-A to RWY 14-32, demolish old pavement)
 - 3 Reconstruct TXV-A from TXV-F to RWY-1
 - 4 Demolish TXV-C between TXV-A and TXV-F
 - 5 Reconstruct Excel Apron Area
 - 6 Realign Main Apron & Drainage Improvements
 - 7 Realign Main Apron & Drainage Improvements
 - 8 Realign Main Apron & Drainage Improvements
 - 9 Realign Main Apron & Drainage Improvements
 - 10 Realign Main Apron & Drainage Improvements
 - 11 Realign Main Apron & Drainage Improvements
 - 12 Realign Main Apron & Drainage Improvements
 - 13 Realign Main Apron & Drainage Improvements
 - 14 Business Development Plan

Proposed Configuration



- 1 Reconstruct & Realign TXY-F & TXY-G (from TXY-A (Install MITL, demolish old pavement))
- 2 Construct TXY-G (from TXY-A to TXY-F, design per
- 3 Reconstruct & Realign TXY-B (from TXY-A to Rwy-1 (Install MITL, demolish old pavement))
- 4 Construct TXY-A from TXY-F to Rwy-1
- 5 Demolish TXY-C between TXY-A and TXY-F
- 6 Reconstruct Excel Apron Area
- 7 Rehabilitate Apron WA
- 8 Rehabilitate Main Apron & Drainage Improvements
- 9 Rehabilitate & Mark Rwy 14-32 (Joint Sealant)
- 10 Rehabilitate & Mark Rwy 1-19 (Joint Sealant)
- 11 Rehabilitate TXY-H
- 12 Rehabilitate TXY-EE
- 13 Rehabilitate TXY-DD
- 14 Business Development Plan

• Construct New Taxiway	\$ 3,650,000
• Reconstruct/Realign F/G	\$ 3,150,000
• Realign Taxiway B	\$ 500,000
• Demolish Taxiway C	\$ 500,000
• Reconstruct South Apron	\$ 1,500,000
• Rehab North (Wing) Apron	\$ 110,000
• Rehab Central Apron	\$ 250,000
• Rehab/Mark RWY 14-32	\$ 500,000
• Rehab/Mark RWY 1-19	\$ 350,000
• Rehab TWYs H, EE, DD	\$ 60,000
• Master Plan Update	<u>\$ 150,000</u>

Construction

\$10,720,000

TDOT Aviation Division
SUMMARY OF ESTIMATED COSTS

Airport
By
Estimate

CONROE
EO
LOI

Revision No.
AUG 2014

Item Description	Construction
1 Reconstruct & Realign TXY-F & TXY-G w/ MITL (Realign TXY-F from TXY-C to TXY-A, and demolish old pavement)	\$ 3,150,000
2 Construct TXY-G (from TXY-K to TXY-F) (previously designed, install MITL)	\$ 3,650,000
3 Reconstruct & Realign TXY-B (from TXY-A to RWY 14-32) (demolish old pavement, install MITL)	\$ 500,000
4 Demolish TXY-C (from TXY-A to TXY-F)	\$ 500,000
5 Reconstruct Excel Apron Area	\$ 1,500,000
6 Rehabilitate Apron WA	\$ 110,000
7 Rehabilitate Main Apron Pavement & Install Drainage Improvements	\$ 250,000
8 Rehabilitate & Mark RWY 14-32 (Replace joint sealant)	\$ 500,000
9 Rehabilitate & Mark RWY 1-19 (Replace joint sealant)	\$ 350,000
10 Rehabilitate TXY-H	\$ 15,000
11 Rehabilitate TXY-EE	\$ 30,000
12 Rehabilitate TXY-DD	\$ 15,000
13 Business Development Plan	\$ 150,000

DRAFT

TOTAL ESTIMATED PROJECT ENGINEERING AND DESIGN COST	ENGINEERING \$	-
TOTAL ESTIMATED PROJECT CONSTRUCTION COST	CONSTRUCTION \$	10,720,000
TOTAL MOBILIZATION, CONTINGENCY TESTING, RPR, & ADMIN. COST	CONTINGENCY \$	-
TOTAL ESTIMATED PROJECT COST	TOTAL \$	10,720,000